

5th HVM New Materials Conference Summit 2019
Cambridge, UK 6-7 November 2019
www.cir-strategy.com/events



Investing in materials and 4IR
technologies



Introduction to CIC

- ^ CIC is a Venture Capital firm, founded by the University of Cambridge in 2013
- ^ A preferred investor for the University of Cambridge, which is the largest shareholder in CIC
- ^ Sole focus on the Cambridge ecosystem
- ^ Focus on life sciences and technology businesses
- ^ £275 million funds under management
- ^ Current portfolio of 29 companies
- ^ £1 billion deployed into the Cambridge economy

WE ENABLE VISIONARIES TO BUILD **GLOBAL,**
CATEGORY-LEADING COMPANIES



A preferred investor for the Cambridge ecosystem

2013

Established by University
of Cambridge

£275m

Funds under
management

11

Team members

29

Cambridge portfolio
companies

£166m

Invested in Cambridge
portfolio

>£1 B

Co-invested in Cambridge
companies

Cambridge ecosystem

University of Cambridge

- Leading innovation University in Europe
- 109 Nobel Prize winners
- Third ranking University-based innovation ecosystem behind Stanford and MIT

The Cambridge ecosystem

- Largest technology hub in Europe
- 4,700 knowledge intensive firms, employing 60,000 people, with £14 billion in revenues
- Over 60 multinational corporations have a Cambridge presence
- Has created 17 unicorn businesses (>\$1B valuation)



Priority technology investment sectors



Artificial Intelligence

Next-generation AI platform technologies

Audio, speech, natural language processing systems

Enterprise Business Intelligence and workflow

Healthcare applications



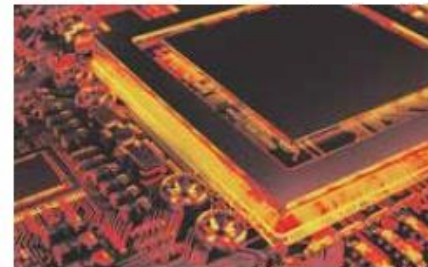
Internet of Things

Edge computing

Low-power wireless technologies

RFID/NFC platforms

Cloud integration



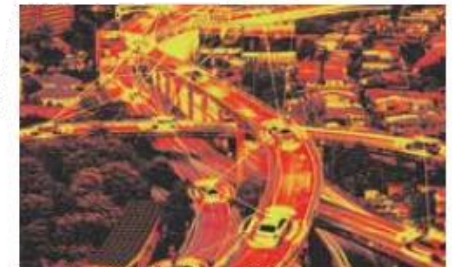
Quantum technologies

Quantum computing hardware and software

Quantum key distribution

Quantum encryption

Cube satellites



Autonomous systems

Image recognition

3D scene construction

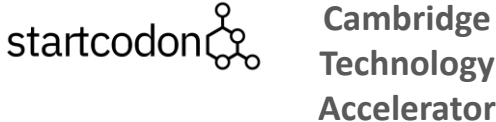
Cooperation robotics

CIC's proprietary access to Cambridge

Privileged relationship with the University of Cambridge



Founders and co-owners of Cambridge accelerators



Active members of Cambridge networks and angel groups



Deep connections with leading research institutions and consultancies



CIC founded Cambridge accelerators

<p>ACCELERATOR</p>			<p>Cambridge Technology Accelerator</p>	
<p>KEY PEOPLE</p>	 <p>Ian Thomlinson CHAIRMAN SVP Global BD, GSK Founder, Domantis</p>	 <p>Jason Mellad MANAGING PARTNER CEO, Cambridge Epigenetics</p>	 <p>Ewan Kirk CHAIRMAN Co-founder & CEO, Cantab Capital</p>	 <p>Stew McTavish MANAGING PARTNER Founding Director, Ideaspace Incubated over 700 start-ups</p>
<p>CO-OWNERS</p>	 		  	

PragmatIC

PragmatIC's unique technology platform delivers ultra low cost flexible integrated circuits (FlexICs) thinner than a human hair that can easily be embedded into everyday objects.

The compact FlexLogIC fab-in-a-box system enables fast, cost effective and scalable distributed production of FlexICs.

The PragmatIC logo consists of the word "PragmatIC" in a bold, black, sans-serif font. The text is contained within a yellow, curved banner that tapers at both ends, resembling a stylized ribbon or a piece of flexible material. A registered trademark symbol (®) is located to the upper right of the letter "C".

PragmatIC[®]

PervasID

Passive RFID fixed reader systems from PervasID solve the majority of all tag readability challenges, changing the landscape of asset tracking and inventory management



Geospock

Geospock's geospatial big data platform enables the storage, visualisation and analysis of extreme datasets generated by the internet of things



Prowler.io

3.0226

67.9929

Prowler.io provides AI-powered decision support solutions to the enterprise in markets ranging, from logistics to financial services and education

25.7524

91.9426



Riverlane

Riverlane is Europe's leading developer of simulation software for quantum computers

They are developing proprietary algorithms for simulating materials and chemicals to quantum mechanical levels of accuracy

The company was founded by former Cambridge mathematician Dr. Steve Brierley

riverlane

CAMBRIDGE INNOVATION CAPITAL

CIC.VC