



Marshall

10th High Value Manufacturing Conference

14th November 2012

Murray Edwards College

www.cir-strategy.com/events/

**innovation and excellence in
engineering and support solutions**

www.marshallaerospace.com

Founded 1909



MARSHALL

MOTOR HOLDINGS

MARSHALL

A E R O S P A C E

MARSHALL **LS**
L A N D S Y S T E M S

World-leading Hi-Technology City and University



Quadruple 'A'

ARM



abcam[®]
discover more

AVEVA

Monthly report on the trade balance

EU entry

Negative imbalance of £100bn per annum



Source: Result...

Import over one third of our food and many raw materials

Seventh place in the World League of Manufacturing Exports

Standard of living of everyone in this country falling quite significantly

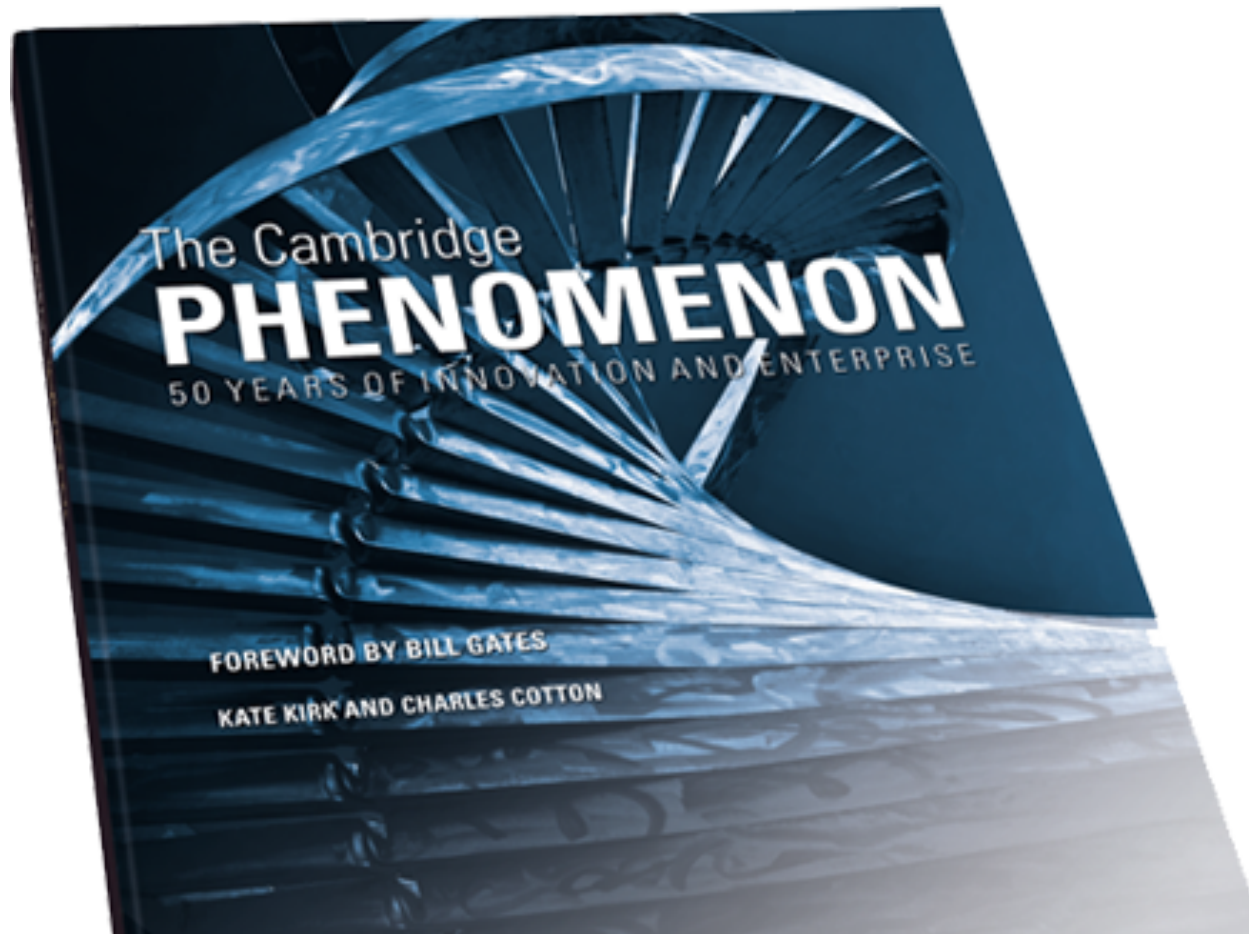


10

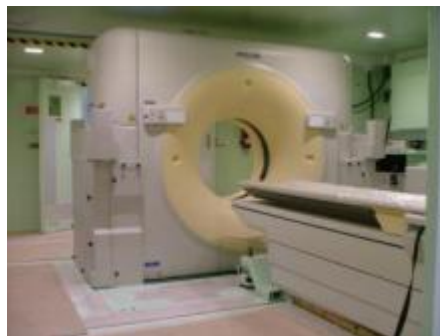
India

Italy





Marshall of Cambridge



David Marshall MBE

1873-1942





Jesus Lane



Marshall Motor Group



Mercedes-Benz









Long Service



Sir Arthur Marshall OBE

1903-2007





Opening of Cambridge's First Airport

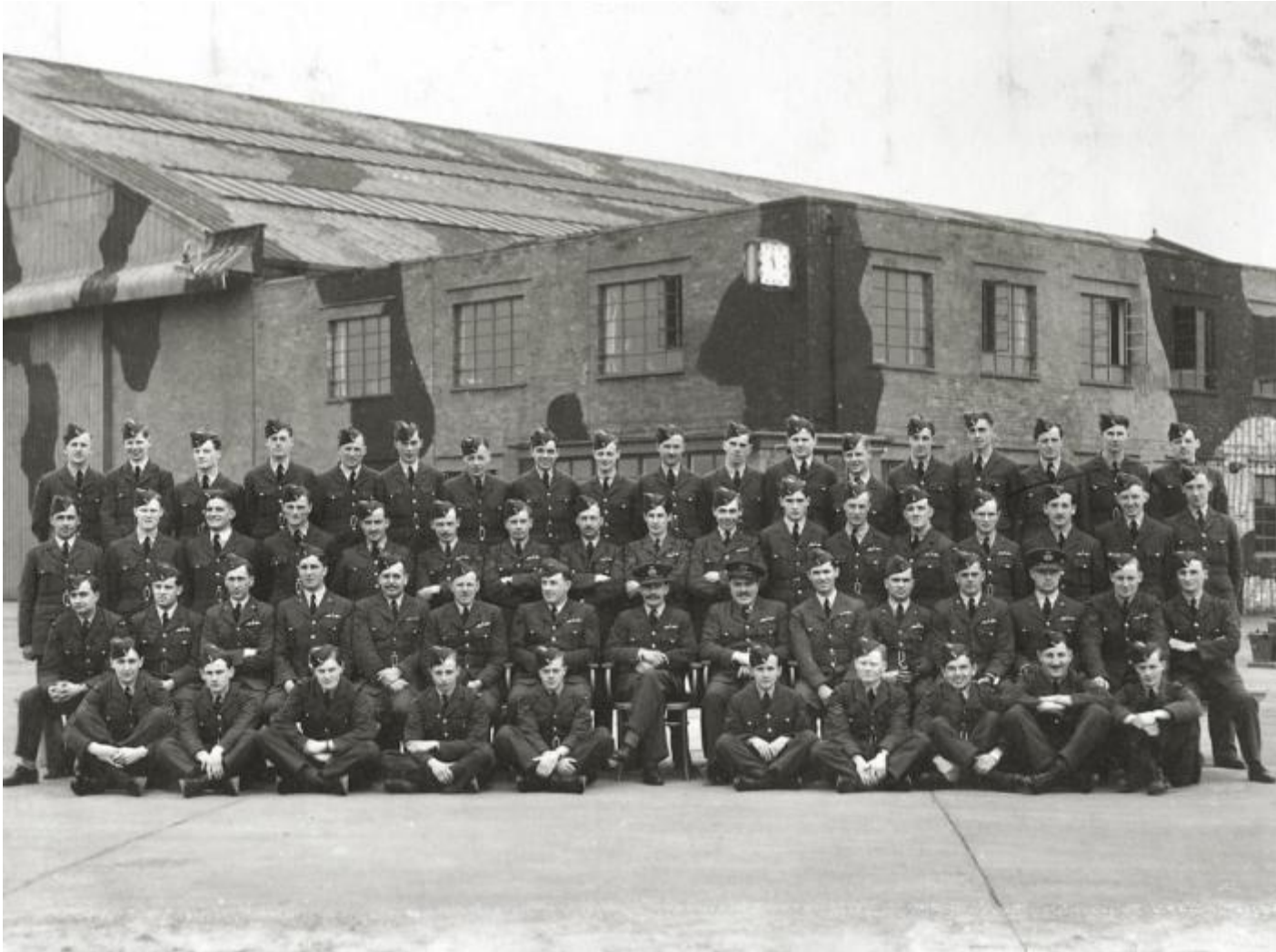


Cambridge Airport Today





Pilot Training













Tom Bacon and his Fuel Cell



Concorde

















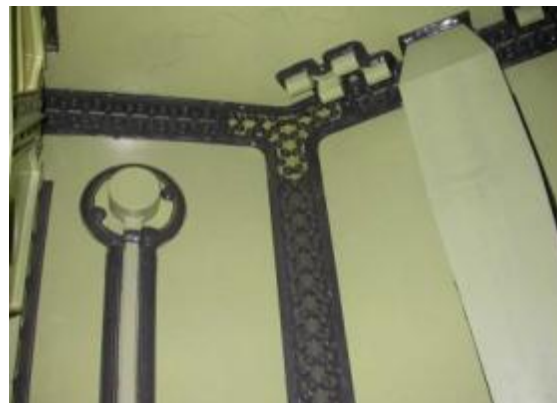
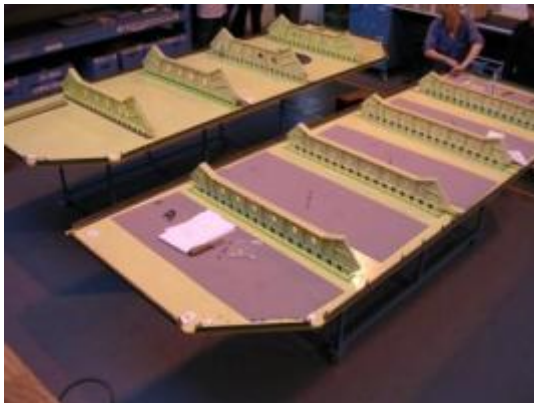






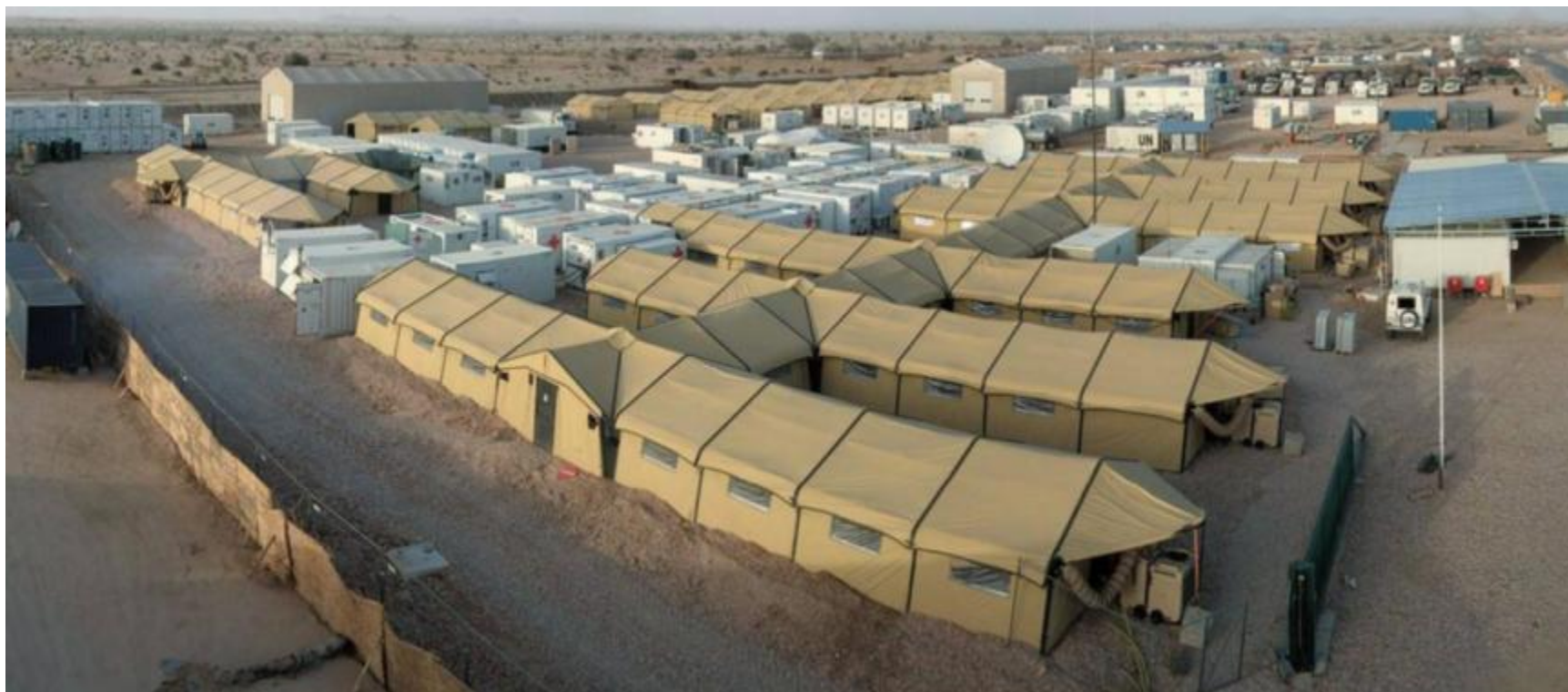


Lightweight Fuel Tanks for Boeing









CT Scanner





Typhoon Pilots Flying Helmet

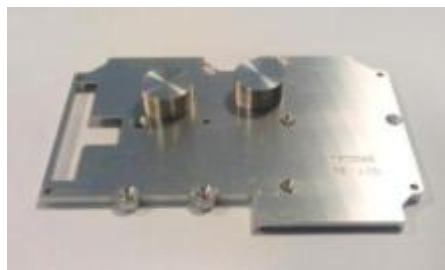




CRFS Radio Equipment



Main Case with RF Absorber



Internal RF Screen



RF Board



Front panel components



Base plate with heat pipes



Digital Board



Front ingress protection



Labels





Export Customers



BRIC Countries



My Challenge!



What more can be done here in Cambridge?

Cambridge2U

Cambridge2U is a free, real time, data-driven business directory that showcases the HSBC-nominated "Supercity's" world-leadership position in creating and scaling great high tech companies - a "big-data" resource that will make doing business in and with Cambridge easier and more transparent for a wide audience, from companies looking to attract customers, investment and top talent, to graduates looking for the right job, from journalists or government officials to investment banks and M&A teams.

People have been telling the story of the Cambridge phenomenon since the 1970s but now, for the first time, the data tells its own story in another world first for Cambridge.

- Who are the hypergrowth companies that I should be investing in?
- Who's on the management team of the leading companies – and how am I connected to them through my own network?
- Who's looking for team members with my skills and experience?
- How many billion dollar companies are there in Cambridge and which are the next ones?

These and myriad other questions can be answered by C2U, the simple, intuitive interface of which belies the complexity of the number-crunching going on below the surface and the wide array of data sources on which it draws. Rich data is provided by companies including LinkedIn, Duedil, the University of Cambridge and leading Cambridge trade bodies.

C2U is a not-for-profit initiative spearheaded by alumni and leaders in the Cambridge community to help support the companies in Cambridge that are scaling their global operations: this genuinely useful resource with groundbreaking technology behind it has been developed by Trampoline Systems (founded by 2 Cambridge Alumni from St. John's College), the team behind the Tech City Map, but its functionality significantly outstrips that of its predecessor.

The partners in the project are:

Sponsors 2012



Twitter Feed

Silicon Republic discusses the future of medtech with Dr. Tom Fogarty, cardiovascular surgeon and medtech...
<http://t.co/uJExFhm>

Follow the creators of our world from tomorrow battle it out in -
<http://t.co/Ocn3wTpM>

Speaker Profile - Andy Richards: Entrepreneur and Angel Investor. -
<http://t.co/fwXzS57x>

Do UK tech companies need Silicon Valley? SVC2UK - Nov 14th to 19th 2012 -
<http://t.co/avb1xwLI>

Follow SVC2UK on Twitter

My Challenge!



What more can be done here in Cambridge?